



Three - phase oil - filled and hermetically sealed transformers 50 - 1000 kVA, 7.2 - 24 kV, **Ecodesign** A₀C_k max., AI winding



BEZ TRANSFORMÁTORÝ
Member of International BEZ Group

Technical data

Standard	IEC 60076, EN 50464 - 1/A1 Ecodesign regulation EU no. 548/2014
Transformer design	Completely oil - filled, hermetically sealed Corrugated tank, cover bolted
Indoor and outdoor use	
Continuous loading	Overload capacity - IEC 60076 - 7
Cooling system	ONAN, mineral oil - EN 60296 *
Ambient temperature	≤ 40°C *, altitude ≤ 1000 m *
Thermal class	105 (A) - temperature rise winding/oil 65/60 K
Corrosion protection	Coating system - class C3 - EN ISO 12944-5 * Standard RAL 7033 *

Electrical characteristics

Rated power	50 - 1000 kVA *
High voltage (HV)	6 kV, 10 kV, 20 kV, 22 kV *
Tapping range HV	± 2 x 2,5 % * off-circuit
Low voltage (LV)	400/231 V, 420/242 V *
Frequency	50 Hz *
Insulation level	Um 24 kV LI/AC 125/50 Um 12 kV LI/AC 75/28 Um 7,2 kV LI/AC 60/20 Um 1,1 kV LI/AC - /3
Vector group	50 - 100 kVA Yzn * 160 - 1000 kVA Dyn *

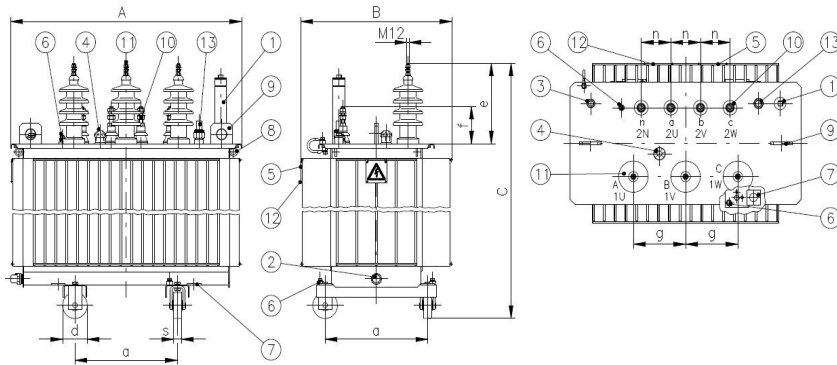


Rated power	kVA	50	100	160	250	315	400	500	630	800	1000
Type	TOHn	269/22	299/22	319/22	339/22	349/22	359/22	369/22	379/22	389/22	399/22
No- load losses A ₀ max	P ₀ (W)	90	145	210	300	360	430	510	600	650	770
No- load current	I ₀ (%)	0,85	0,75	0,6	0,5	0,45	0,4	0,35	0,3	0,2	0,18
Load losses C _k max.	P _{k75°C} (W)	1100	1750	2350	3250	3900	4600	5500	6500	8400	10500
Impedance voltage	u _{k75°C} (%)	4	4	4	4	4	4	4	4	6	6
Sound level											
- pressure (0,3 m)	L _{PA} dB(A)	30	32	34	37	39	40	41	42	43	45
- power	L _{WA} dB(A)	39	41	44	47	49	50	51	52	53	55
Dimensions											
- length (mm)	A	945	1045	1075	1040	1095	1160	1175	1290	1385	1710
- width (mm)	B	670	665	710	700	810	800	845	870	940	970
- height (mm)	C (6,10 kV)	1145	1370	1285	1360	1390	1445	1505	1480	1610	1745
	C (20,22 kV)	1260	1485	1400	1475	1505	1560	1620	1595	1715	1790
Weight [kg]											
	Oil	130	180	200	220	250	305	325	355	505	600
	Total	605	810	975	1050	1290	1525	1715	1905	2485	2870

For any alternative requirements (*) please contact manufacturer.

BEZ TRANSFORMÁTORÝ, a. s., Rybníčná 40, 835 54 Bratislava, Slovak Republic, tel.: +421 2 4961 1200, e-mail: bez.or@bez.sk, www.bez.sk

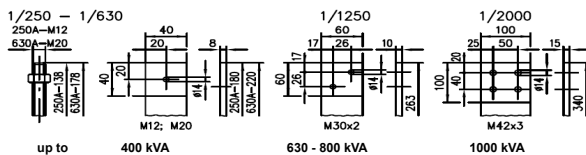
108.A_28.1.2016



Outline drawing

1. Oil filling plug
 - Integrated safety detector (R.I.S) *
 - Pressure relief valve *
2. Oil drain valve
3. Thermometer pocket
 - thermometer *
 - (with or without contacts)
4. Tap changer handler
5. Rating plate
6. Earthing terminal
7. Pulling plug
8. Lushing eye
9. Lifting lug
10. LV Bushing EN 50386
 - clamp with cover *
11. HV Bushing EN 50180 P2
 - plug - in bushing outer cone *
12. Trade mark
13. Oil level gauge*

LV Termination



Dimensions

Rated power (kVA)	50	100	160	250	315	400	500	630	800	1000
Type - TOHn	269/22	299/22	319/22	339/22	349/22	359/22	369/22	379/22	389/22	399/22
d (mm)	125	125	125	125	125	125	125	125	125	160
s (mm)	40	40	40	40	40	40	40	40	40	50
a (mm)	520	520	520	520	670	670	670	670	670	820
e (mm)	10 kV	270	270	270	270	270	270	270	270	270
	22 kV	385	385	385	385	385	385	385	385	385
f (mm)	138	180	180	220	220	220	220	263	263	340
g (mm)	265	265	265	265	265	265	265	265	265	265
n (mm)	125	125	125	150	150	150	150	150	150	150

Company reserves the right to modify data without notice.

Shown values serve as guidance only i.e. definitive dimensions and weights are subject to modification according to concrete purchase order.

BEZ TRANSFORMÁTORÝ, a. s., Rybníčná 40, 835 54 Bratislava, Slovak Republic, tel.: +421 2 4961 1200, e-mail: bez.or@bez.sk, www.bez.sk

108.A_28.1.2016